

RK-RSC

SINGLE OR DUAL DEVICE 1U RACK MOUNT ACCESSORY



MOUNT 1 OR 2 DEVICES - SUPPORTS
S8-POE | ROUTE 10 | [A] CONTROL™

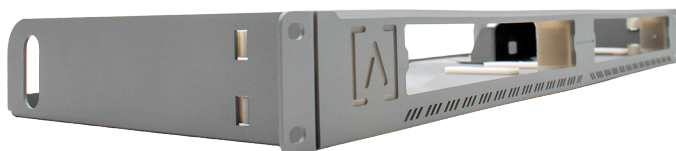
BY POPULAR DEMAND!

Alta Labs is always listening to feedback from our customers. We've altered development schedules to prioritize customer's requests when it's been warranted. We're happy to finally announce the new **RK-RSC** 1U Rack Mount Accessory, one of the most frequently requested products from our users. It can be used to host one or two Alta Labs devices in a single 1U rack mount space.

It has been designed to accommodate the following products:

- **Route10** 10 Gbps Router
- **S8-POE** 8-Port Managed Ethernet Switch
- **Control** Network Controller

[Contact](#) your favorite reseller to order now!



Top View (No Products)



Back View (No Products)



Top View (Route10 and S8-POE Installed)



Right Side View

MECHANICAL	
Dimensions	448 x 184 x 44.8 mm (17.64 x 7.24 x 1.76")
Weight	0.98 kg (2.16 lbs)
Material Type	SGCC
Material Finish	Powder coat - Matte
Color	Metalic gray
Compatibility	
Bay 1	Route10, S8-POE, or Control
Bay 2	Route10, S8-POE, or Control



Use for Single or Dual Devices