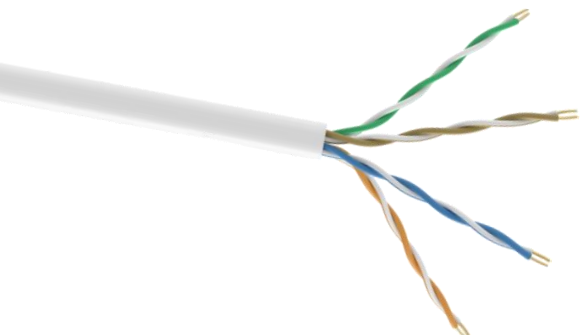


Conexpro UTP cable, CAT5e, LSZH, 24AWG, 305m, white



EAN: 0710497560863

PN: 5EUTP-LS

Fire classification

Reaction to fire class: Dca,s2,d2,a1

Sheath type: LSZH

Specifications

Installation temperature	0 °C to 50 °C
Storage temperature	-20 °C to 60 °C
Cable cross-section	AWG24
Cable type	Solid
Shielding type	UTP (U/UTP)
Usage	Indoor
Conductor type	Copper
Sheath type	LSZH
Bandwidth	100 MHz
Supported protocols	1000 Base-T
Category	CAT5e
Color	White

Logistics information

Packaging size **37 cm x 23 cm x 37 cm**

Packaging Weight **10,5 kg**



Technical characteristics (100m)

Frequency (MHz)	Return Loss (dB)	Attenuation (dB/100m)	PSNEXT (dB)	NEXT (dB)	Phase Delay (ns/100m)
1	20	2.0	62.3	65.3	570.00
4	23	4.1	53.3	56.3	552.00
8	24.5	5.8	48.8	51.8	546.73
10	25	6.5	47.3	50.3	545.38
16	25	8.2	44.4	47.2	543.00
20	25	9.3	42.8	45.8	542.05
25	24.3	10.4	41.3	44.3	541.20
31.25	23.6	11.7	39.9	42.9	540.44
62.5	21.5	17.0	35.4	38.4	538.55
100	20.1	22.0	32.3	35.3	537.60

Cable cross-section

