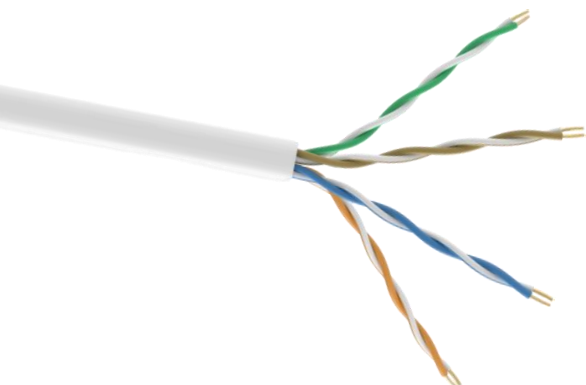


Conexpro UTP cable economy, CAT5e, LSZH, 24AWG, 305m, white



EAN: 0710497560924

PN: 5EUTP-LSE

Fire classification

Reaction to fire class: Dca,s2,d2,a1

Sheath type: LSZH

Specifications

Installation temperature	0 °C to 50 °C
Storage temperature	-20 °C to 60 °C
Cable cross-section	AWG24
Cable type	Solid
Shielding type	UTP (U/UTP)
Usage	Indoor
Conductor type	CCA
Sheath type	LSZH
Bandwidth	100 MHz
Supported protocols	1000 Base-T
Category	CAT5e
Color	White

Logistics information

Packaging size **36 cm x 35,5 cm x 22,5 cm**

Packaging Weight **6,8 kg**



Technical characteristics (65m)

Frequency (MHz)	Return Loss (dB)	Attenuation (dB/65m)	PSNEXT (dB)	NEXT (dB)	Phase Delay (ns/65m)
1	17.0	2.2	57.0	60.0	580
4.0	17.0	4.5	50.5	53.5	562
10.0	17.0	7.1	44.0	47.0	555
16.0	17.0	9.1	40.6	43.6	553
20.0	17.0	10.2	39.0	42.0	552
31.25	15.1	12.9	35.7	38.7	550
62.5	12.1	18.6	30.6	33.6	549
100	10	24.0	27.1	30.1	548

Cable cross-section

