


Quick Installation Guide

cudy
 www.cudy.com
 Email: support@cudy.com
 Company: Shenzhen Cudy Technology Co., Ltd



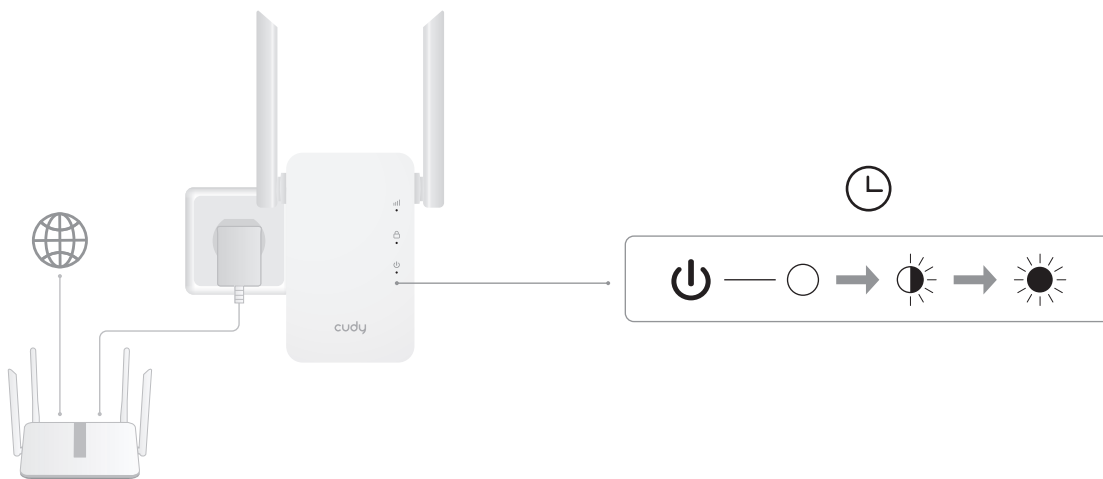
NEED TECH HELP?

- www.cudy.com/qr_vg_re
- www.cudy.com
- support@cudy.com
- www.cudy.com/download



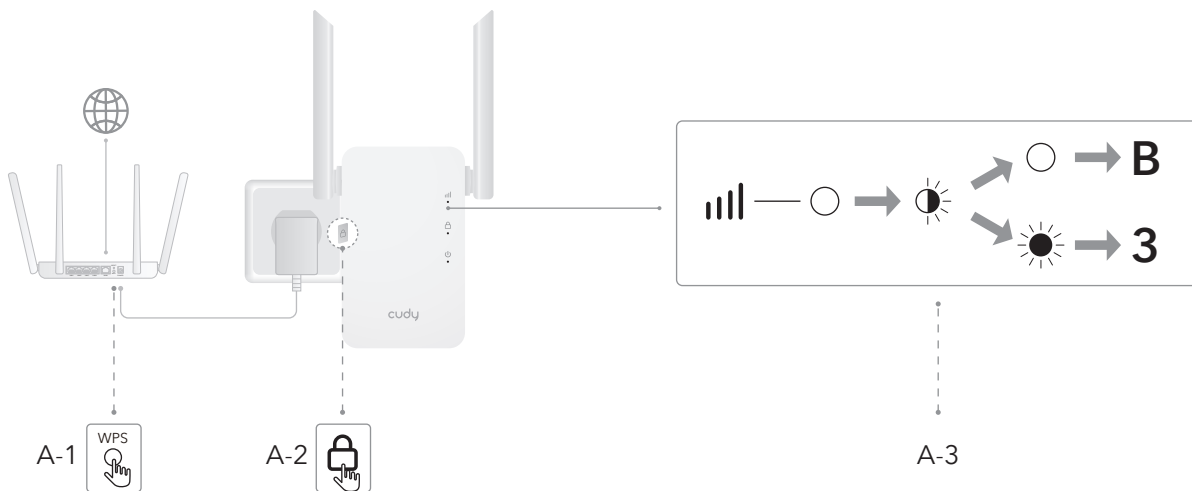
810600193

1 Plug the extender into the socket **near your router** and wait for it to boot up.

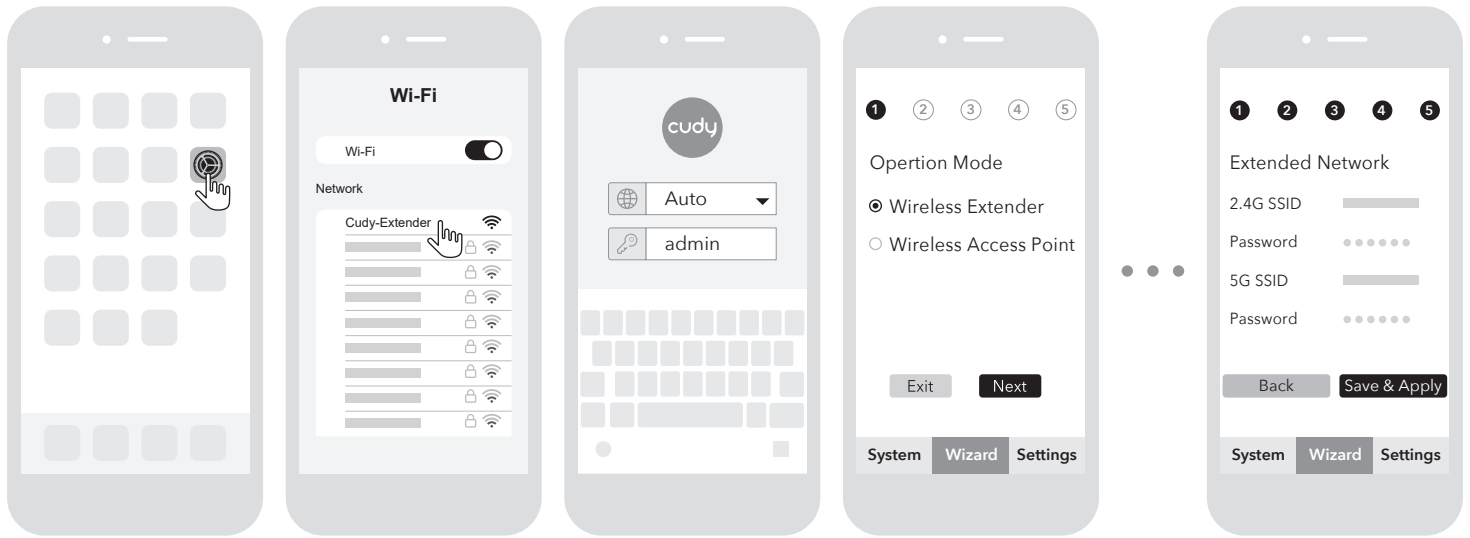


2 Pair the extender with your router using method A or B.

A Press the WPS buttons on your router and then the extender, and wait for the LED to light up.

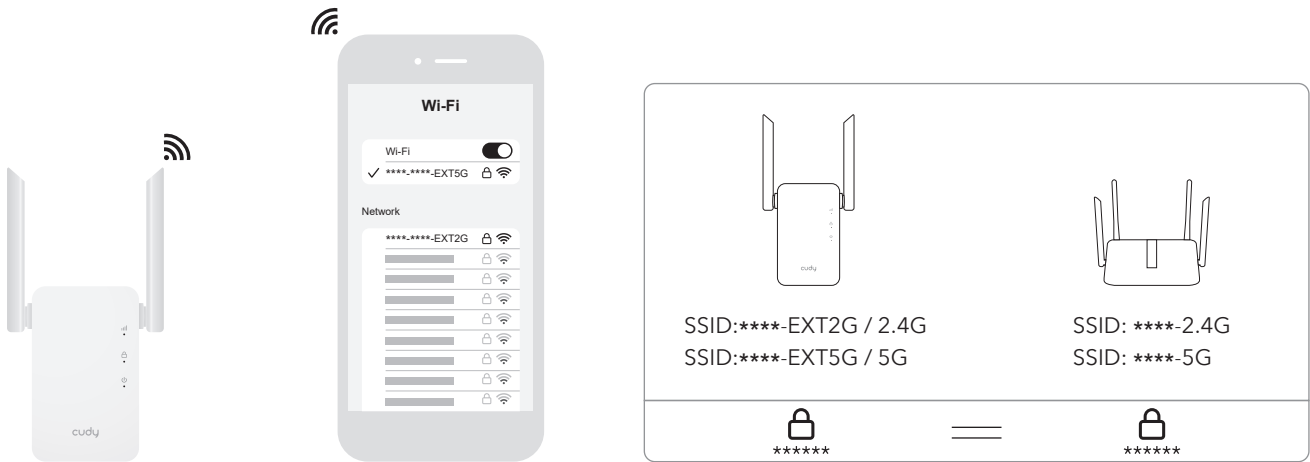


B Connect your computer or phone to the extender's Wi-Fi and set it up in your browser. Follow the steps shown in the pictures.

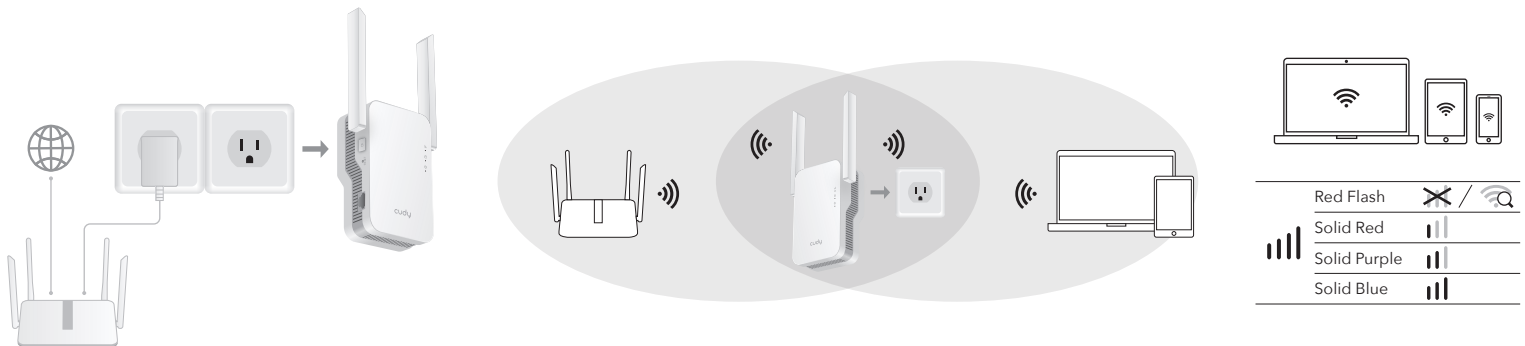


3 Connect your device to the extended Wi-Fi and try accessing the Internet. By default, the password for the extended network will be the same as the original network.

Note: If you paired the extender with a "Cudy Mesh" device by pressing the WPS buttons, the Wi-Fi name will be the same as the original Wi-Fi.



4 Relocate the extender between the Wi-Fi coverage area and the area where you want to expand the Wi-Fi signal.



4-1

4-2

4-3

