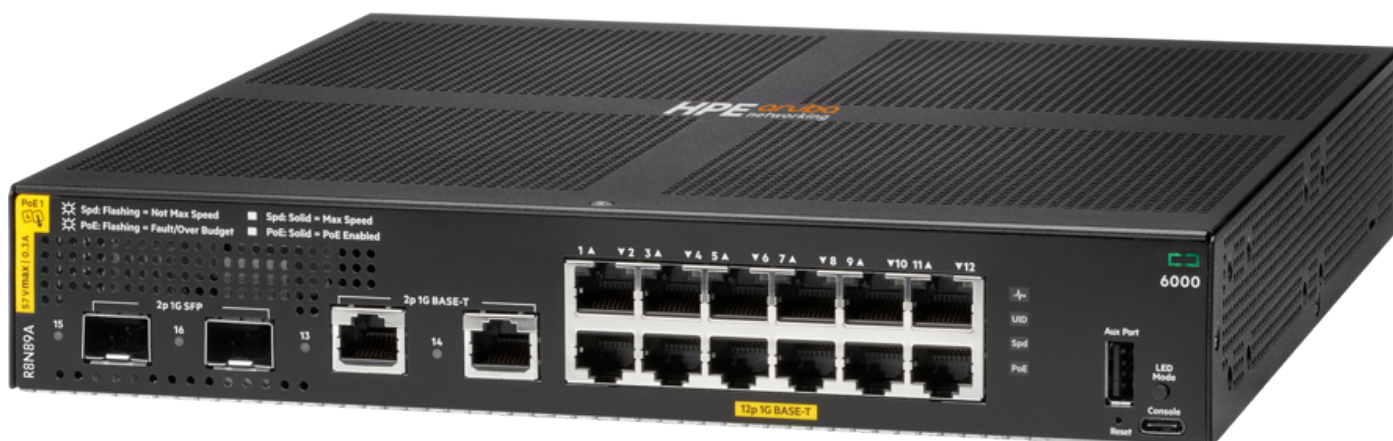


HPE Aruba Networking CX 6000 Switch Series

HPE Aruba Networking CX 6000 12G Class4 PoE 2G/2SFP 139W Switch (R8N89A)



What's new

- Simplify IT operations with modern Layer 2 Gigabit Ethernet switch series that provides entry level, reliable, and convenient wired access connectivity.
- Convenient built-in 1GbE uplinks and up to 740W of Class 4 PoE for support of access points, client, and IoT devices.
- Compact and fanless 12 port PoE model for space-constrained deployments.
- Flexibility to manage with Aruba Central [1], easy to use Web GUI, CLI, or Aruba NetEdit.

Overview

The HPE Aruba Networking CX 6000 Switch Series is modern family of entry level access switches ideal for branch offices, midsize businesses, and small enterprises. Designed for reliable, simple, and security-enhanced access, the HPE Aruba CX 6000 series provides a convenient and cost-effective wired access solution for networks supporting IoT, mobile, and cloud applications.

The HPE Aruba Networking CX 6000 Switch Series is based on the Aruba ASIC architecture with the programmable AOS-CX operating system used across the entire Aruba CX portfolio for a more consistent, more efficient operator experience. This fully-managed series has convenient built-in uplinks with up to 740W of Class 4 PoE to support IoT devices such as security cameras and wireless APs. A compact and fanless model is ideal

- Software defined ready with REST APIs.
- HPE Limited Lifetime Warranty and switch software embedded with no subscription required to enable.

for use in quiet, small work spaces. The HPE Aruba CX 6000 series is easy to deploy and use with flexible management choices, allowing the best fit for your business and network environment.

Features

Entry Level Aruba CX Access Layer Switches

The HPE Aruba Networking CX 6000 Switch Series offers Ethernet gigabit connectivity and optional PoE to provide entry level, reliable, and convenient wired access connectivity for enterprise branch offices and SMB networks.

Using Aruba AOS-CX operating system across Aruba CX switching platforms and access-to-core-to-data center deployment domains provides a simpler, more consistent operator experience.

Fully-managed enterprise class switches deliver Layer 2 capabilities with support static routing, ACLs, robust QoS, traffic prioritization, sFlow, and IPv6 support.

Right size deployment with choice of 12, 24, and 48 port 1U models with convenient built-in 1GbE uplinks and up to 740W of Class 4 PoE.

Simplifies ownership with no switch software licensing or subscriptions required.

Performance and Power

The HPE Aruba Networking CX 6000 Switch Series is designed with Aruba ASICs that deliver very low latency, increased packet buffering, and adaptive power consumption.

Deploy wireless access points and IoT devices with HPE Aruba Networking CX 6000 switch models that support up to 740W IEEE 802.3at Class 4 Power over Ethernet for up to 30W per port.

Up to four built-in wire speed 1GbE uplinks remove bottlenecks at the access layer where users and devices connect.

Simplified Configuration and Management

The HPE Aruba Networking CX 6000 Switch Series provides flexibility to manage and simplify configurations with Aruba NetEdit, Aruba Central [1], easy to use Web GUI, or industry standard CLI.

Aruba NetEdit introduces automation that allows for rapid network-wide changes, and verifies policy conformance post network updates.

Software-defined ready with REST APIs for fine-grained programmability of network tasks.

Reduce manual IT operation tasks around initial deployment or on-going configuration changes to accommodate adds, moves, and changes with colorless ports using local user roles and local-MAC-Authentication (LMA).



Technical specifications**HPE Aruba Networking CX 6000 12G Class4 PoE 2G/2SFP 139W Switch**

Product Number	R8N89A
Ports	12x ports 10/100/1000BASE-T Ports 2x 1G SFP ports 2x 1GbE ports
Memory and processor	Dual Core ARM Cortex A9 @ 1016 Mhz 8 GB DDR3, maximum, depending on model 16 GB eMMC
Latency	1 Gbps: 2.3 µSec
Throughput	23.8 Mpps
Switching capacity	32 Gbps
PoE capability	139W Class 4 PoE/PoE+
Routing capabilities	Static
Input voltage	100-127 VAC / 200-240 VAC
Operating temperature	32°F to 113°F (0°C to 45°C) up to 5000 ft (1.5 km) derate -1°C for every 1000 ft (305 m) from 5000 ft (1.5 km) to 10000 ft (3.0 km)
Power consumption	Max Power (w/o PoE): 21.9W Max Power (w/ PoE): 170W
Product dimensions (metric)	4.4 x 25.4 x 25.5 cm
Weight	2.8 kg

[1] Aruba Central support coming in future release.



For additional technical information, available models and options, please reference the [QuickSpecs](#)

HPE Aruba Networking Services

HPE Aruba Networking services simplify and accelerate the network technology lifecycle, enabling your network to scale with better predictability and cost-effectiveness. Whether you operate your own network and need to improve your IT efficiencies, or you want to offload some of the burden, we have the services you need to reach your goals.

Learn more about what HPE Services - Aruba Networking has to offer at: arubanetworks.com/services/

Support Services

Our support portfolio provides the essential support elements as well as proactive and preventive features to help you improve your team's productivity and get the most from your network. Our support customers benefit from faster issue resolution, simplified operations and efficiencies, and reduced network issues.

Professional Services

With deep intellectual capital and purpose-built tools, our team delivers a range of standard and custom professional services designed to accelerate your value from HPE Aruba Networking technology.

Project based services include: Annual subscription services include:

- Planning, audit, and assessment
- Architecture review and design
- Deployment, migration, and knowledge transfer
- Network optimization
- Intelligent Operations
- Customer Experience Management

Our [Education Services](#) allow your team to come up to speed quickly.

HPE GreenLake for Networking

Our NaaS solution, HPE Aruba Networking Managed Connectivity services, part of the HPE GreenLake services family, simplifies network operations, accelerates equipment handling, and increases the value of your HPE Aruba Networking network. If you need expert guidance and automation-based operations for your team, please explore the NaaS approach from HPE Aruba Networking [here](#).

Make the right purchase decision.
Contact our presales specialists.



Contact us

Visit ArubaNetworks.com



© Copyright 2024 Hewlett Packard Enterprise Development LP. The information contained herein is subject to change without notice. The only warranties for Hewlett Packard Enterprise products and services are set forth in the express warranty statements accompanying such products and services. Nothing herein should be construed as constituting an additional warranty. Hewlett Packard Enterprise shall not be liable for technical or editorial errors or omissions contained herein.

Parts and Materials: HPE will provide HPE-supported replacement parts and materials required to maintain the covered hardware.

Parts and components that have reached their maximum supported lifetime and/or the maximum usage limitations as set forth in the manufacturer's operating manual, product quick-specs, or the technical product data sheet will not be provided, repaired, or replaced as part of these services.

Image may differ from the actual product [PSN1014.132928CZEN](#), October, 2024.