



# CRS520-4XS-16XQ-RM

An **ultra-fast enterprise switch**  
with extra processing power due to the CCR series CPU &  
the **best price per 100 Gigabit port** on the market!



16x 100G  
QSFP28 ports



4x 25G  
SFP28 ports



2x 10G  
Ethernet ports



Console port



Hot-swap power  
supplies & cooling



Mighty quad-core  
2 GHz ARM CPU

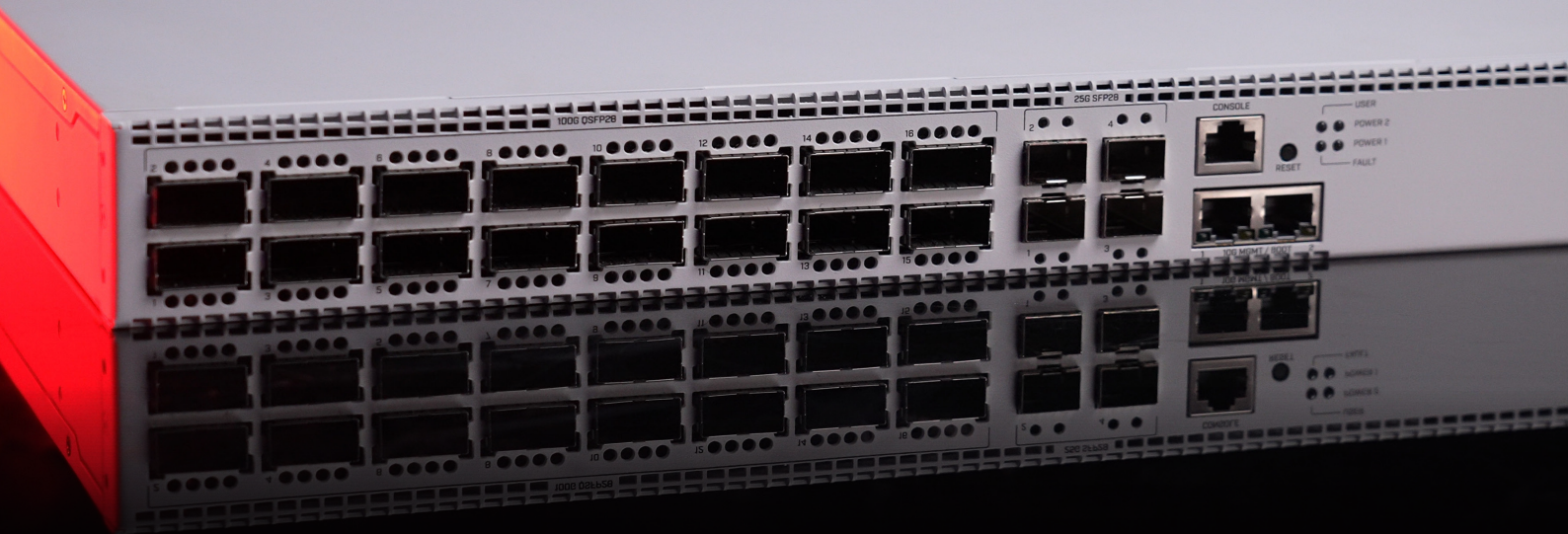


4GB of DDR4 RAM



Welcome to the forefront of networking: the future-proof CRS520-4XS-16XQ-RM with **extra processing power, 4 GB of DDR4 RAM**, and the best price per 100 Gigabit port we've seen so far.

With **16x 100 Gigabit** QSFP28 ports, **4x 25 Gigabit** SFP28 ports, and an extra **pair of 10 Gigabit Ethernet** ports, this switch can bring a lot of value to complicated enterprise networks, data centers, multimedia studios, and other setups where you would typically use several devices. Now – a single CRS520 can do the trick!



Avid CCR users might recognize the **powerful quad-core ARM CPU** running at 2 GHz, and ask – why would a switch need all that power? Two reasons:

1) CRS520 is more than a switch. You can **run OSPF/BGP**, out-of-band/management **VPNs**, ACLs, Jumbo frames and even **L3HW Offloaded routing**;

2) Future-proofing: as our friends at Marvell keep expanding the capabilities of their spectacular switch-chips, our in-house software team is busy exploring ways to add even more Hardware Offloaded features. You can expect software updates that will take the CRS520 to the **next** level! And all that without any paywalls or subscriptions.

## • Specifications

|   |                                   |
|---|-----------------------------------|
| Product code                            | CRS520-4XS-16XQ-RM                |
| CPU                                     | Quad-Core AL52400 2 GHz           |
| CPU architecture                        | ARM 64bit                         |
| Size of RAM                             | 4 GB                              |
| RAM type                                | DDR4                              |
| Storage                                 | 128 MB, NAND                      |
| Number of 1G/2.5G/5G/10G Ethernet ports | 2                                 |
| Number of 25G SFP28 ports               | 4                                 |
| Number of 100G QSFP28 ports             | 16                                |
| Switch chip model                       | 98CX8410                          |
| Operating system                        | RouterOS v7 only, License level 5 |
| Dimensions                              | 443 x 367 x 44 mm                 |
| Operating temperature                   | -20°C to +50°C                    |

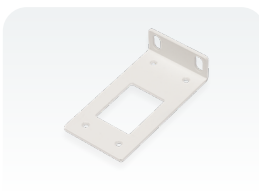
## • Powering

|   |           |
|---|-----------|
| Number of AC inputs                         | 2         |
| Nominal current                             | 10.25 A   |
| Max current                                 | 12.5 A    |
| AC input range                              | 100-240 V |
| Frequency                                   | 47-63 Hz  |
| Max power consumption (without attachments) | 123 W     |
| Max power consumption                       | 183 W     |

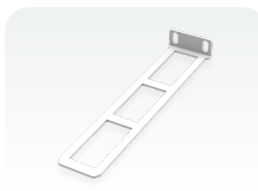
## • Included parts



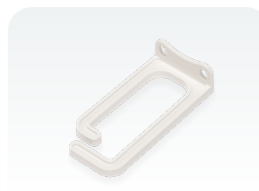
2 Power cords



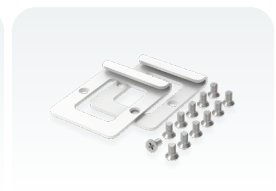
Rackmount ears



Rackmount rear support ears



Cable management bracket



Fastening set