



Wi-Fi 6E

EasyMesh
— Compatible —

HomeShield

AXE5400 Tri-Band Wi-Fi 6E Gaming Router

Ignite Your Gaming with Millions of Colors



Archer GXE75

2.5G Multi-Gigabit Port
for Blazing-Fast Connectivity^s

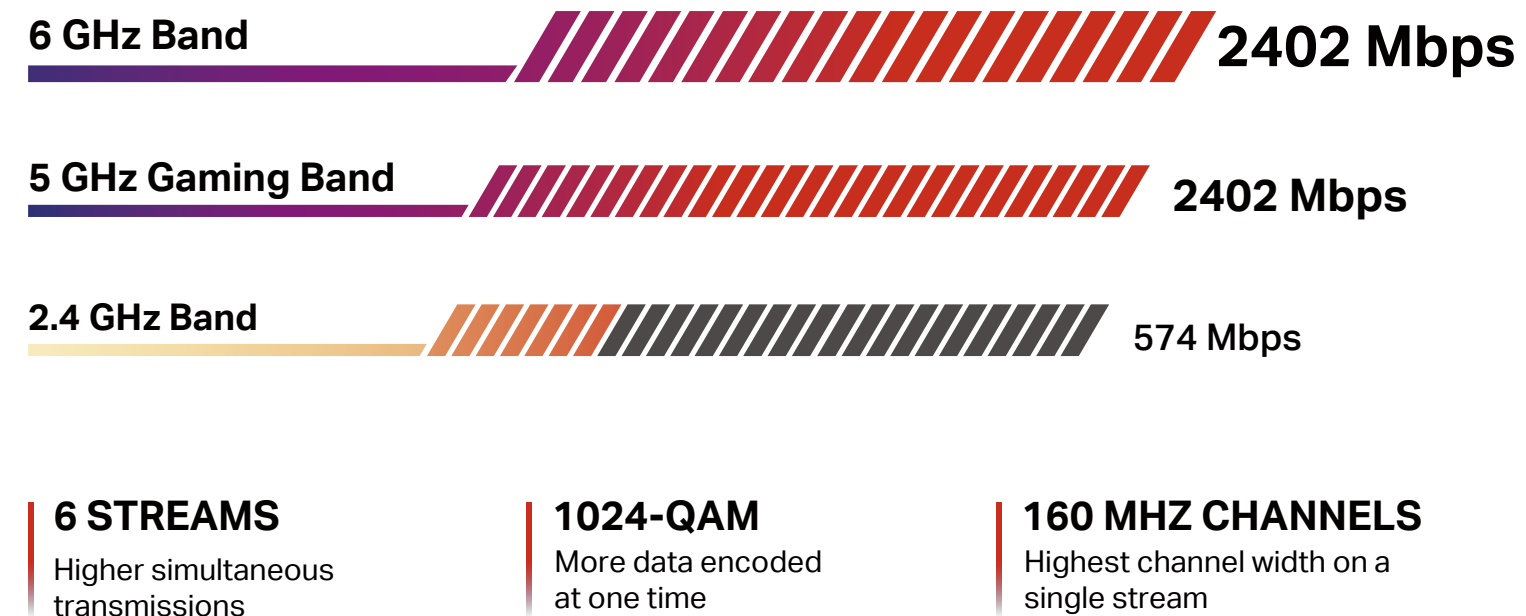
5.4 Gbps Tri-Band Wi-Fi
up to 5400 Mbps^{t*}

Exclusive Game Acceleration
for Minimal Latency

Highlights

Wi-Fi 6E — Run Your Wi-Fi at Top Gear

Up to 5.4 Gbps Tri-Band WiFi enables your devices always ready for the fiercest battles. The brand new 6 GHz band provides exceptional bandwidth and congestion-free channels exclusive to Wi-Fi 6E devices. †‡



HomeShield Keep Elements Secure

HomeShield provides robust antivirus protection for a secure gaming experience. It defends all your devices and personal data against online threats, ensuring peace of mind while gaming. Δ



Highlights

Exclusive Game Acceleration for Minimal Latency



Prioritize Game Applications with QoS

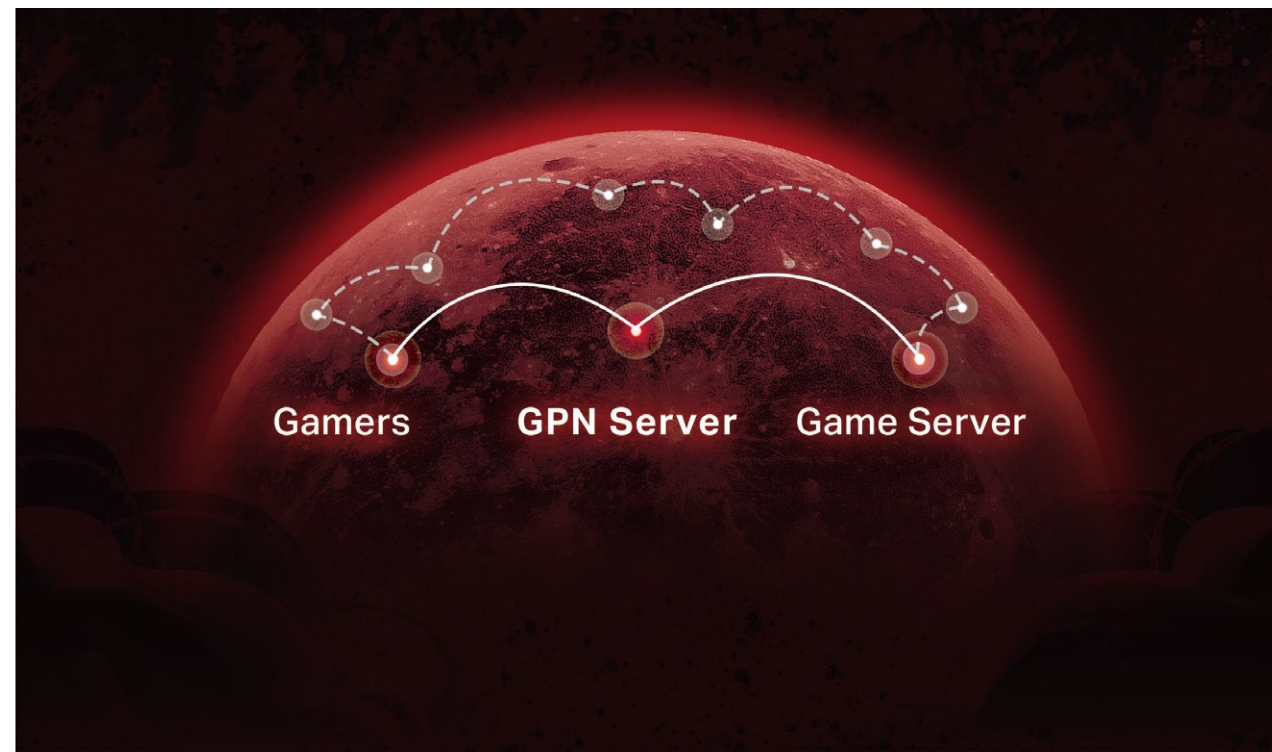
Automatically detects and optimizes gaming streams to accelerate your game applications to run at high speeds, even on a crowded network.

Prioritize Game Devices with the Gaming Port

Automatically prioritizes your game device traffic, letting you focus on play, not battling for bandwidth.

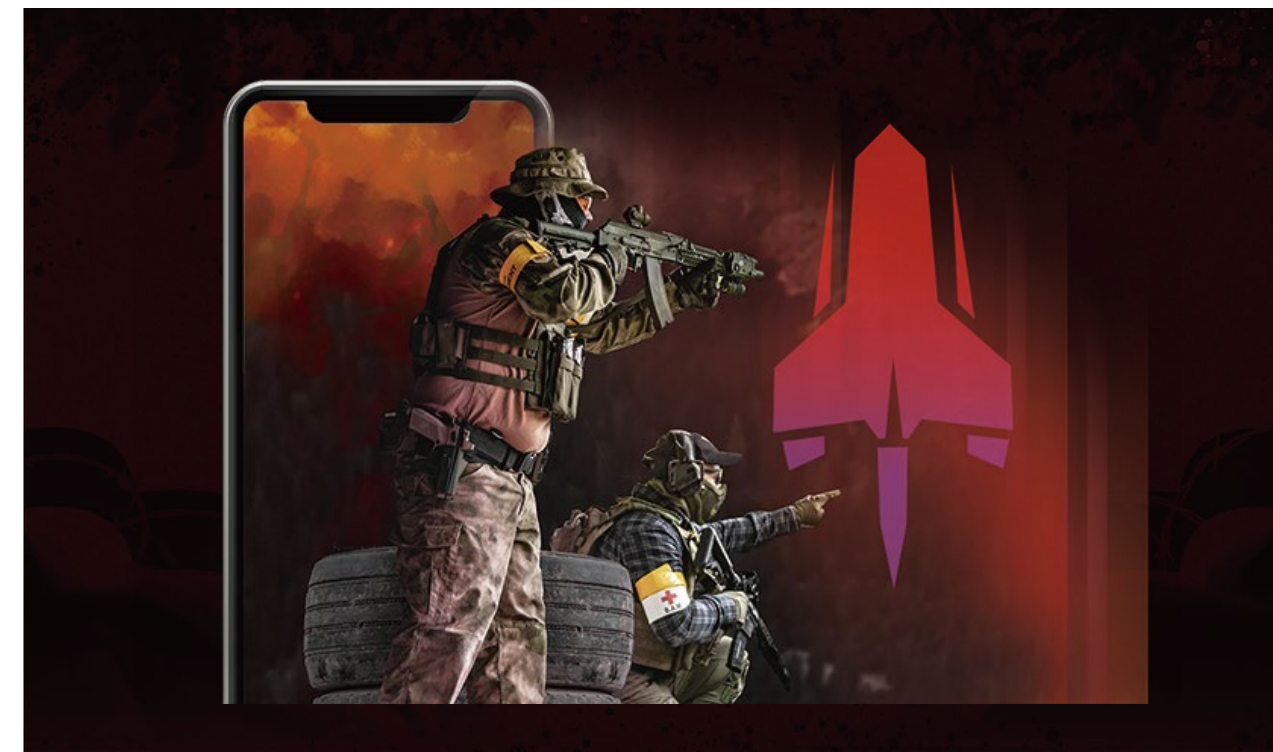
Highlights

Exclusive Game Acceleration for Minimal Latency



Game Server Acceleration by GPN

Slash your game ping and packet loss with GPN (Gamers Private Network). A shorter path from gamers to game servers driven by real-time measurements is your secret weapon for winning.



Mobile Game Acceleration

Minimize lag and latency for mobile gaming during network congestion to give yourself the edge whether you're playing solo or on a team.

Highlights



Flexible Network Port Configurations

Archer GXE75 ensures max flexibility and boosted throughput, which provides massive bandwidth to wired gaming devices and ultra-fast internet connections in any gaming scenario. [§]

Obliterate Dead Zones

Enjoy uninterrupted gaming in every corner of your home with 4x optimally positioned antennas, proprietary Wi-Fi optimization, and Beamforming technology. Turn every corner into your personal gaming arena.

Features



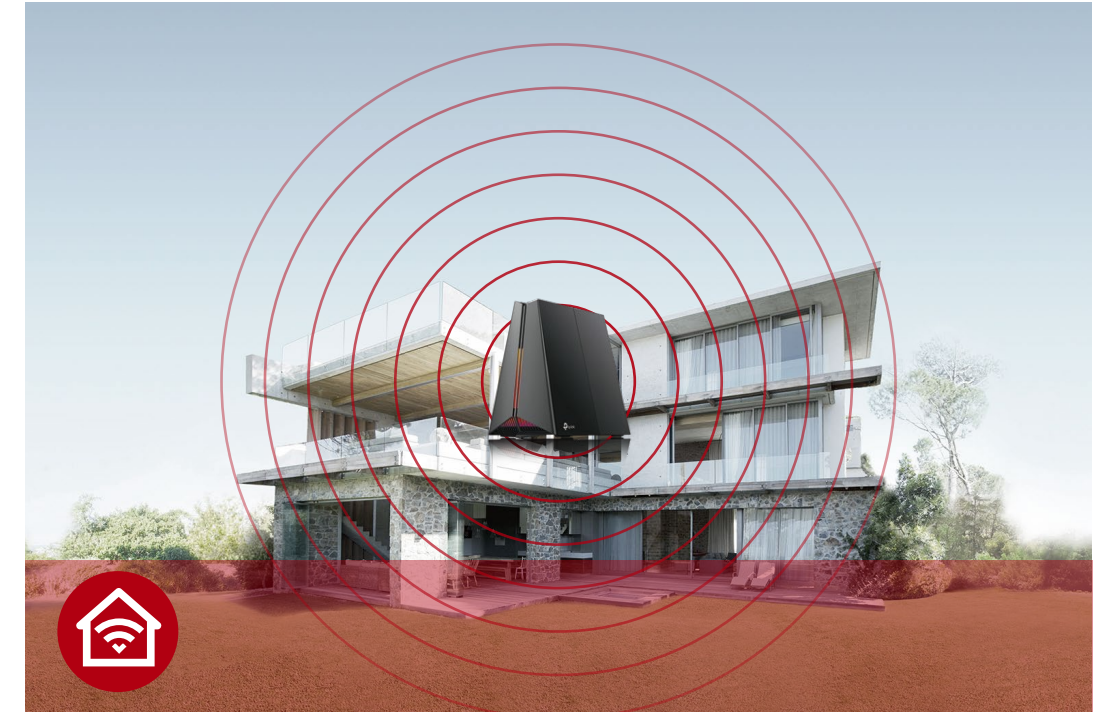
Ultra-Fast Speed

- Warp-Speed 5.4 Gbps Wi-Fi – Up to 5.4 Gbps tri-band Wi-Fi 6E enables gaming, streaming and high-speed downloading on multiple devices—all at the same time.[†]
- 2.5G Multi-Gigabit Port – 1× 2.5 Gbps WAN/LAN port + 1× 1Gbps WAN/LAN port + 3× 1 Gbps LAN Ports + 1× USB 3.0 port ensure max flexibility and boosted throughput.
- Greenfield 6 GHz Band – Provides robust high-speed connections with a brand-new expansive and congestion-free band.
- Smart Connect – Intelligently assigns each device to the best Wi-Fi band for optimal performance.



High Capacity and Reliable Connections

- Maximized Capacity – Communicates with multiple devices via 6 streams and tri-band simultaneously. Combined with OFDMA and MU-MIMO, 6 streams won't affect your online gaming.[‡]
- 5.4 Gbps Tri-Band WiFi 6E – Enables your devices to run at full speed. Enjoy fluent 4K/8K streaming, immersive AR/VR gaming, and lightning-fast downloads.^{†‡}
- Airtime Fairness – Balances bandwidth of connected devices to improve overall throughput and efficiency.



Broad Wi-Fi Range

- Maximized Coverage – Proprietary WiFi optimization and 4× optimally positioned antennas along with Beamforming deliver more capacity, stronger and more reliable connections, and less interference.
- Beamforming Technology – Concentrates Wi-Fi signals towards individual devices to ensure stronger connections.
- Seamless EasyMesh network – Transfer between seamless whole-home Wi-Fi without any drops or lag and manage your whole network using a centralized panel. ^{**}

Features



Ease of Use

- Hassle-free Management with Tether App – Network management is made easy with the TP-Link Tether app, available on any Android and iOS device.
- Intuitive Web UI – Ensures quick and simple installation without hassle.
- WPS (Wi-Fi Protected Setup) – Help you to quickly and securely connect your devices to the router's network with a tap.
- Backwards Compatible – Take your Wi-Fi to the next level while being backwards compatible with existing 802.11 a/b/g/n/ac/ax Wi-Fi standards.
- Works with Amazon Alexa and Google Assistant – Utilize Amazon Alexa and Google Assistant to control everything via voice commands to enjoy truly intelligent life.

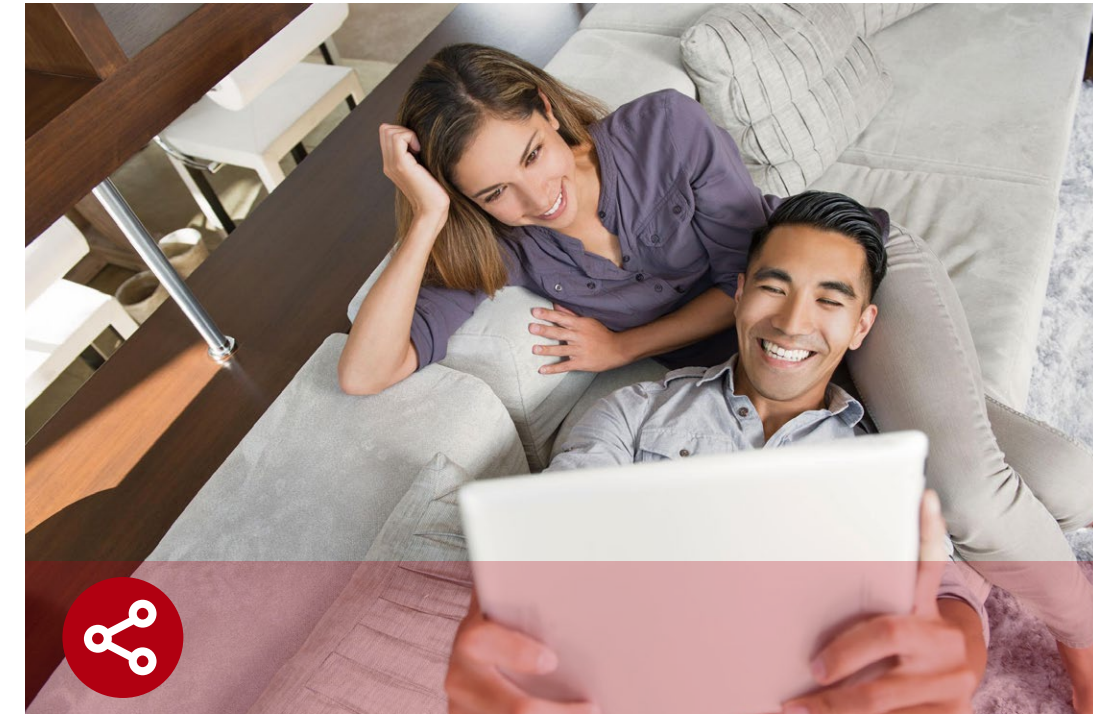


Scan the QR code to download TP-Link Tether.



Robust Security

- HomeShield – TP-Link's premium security services keep your home network safe with cutting-edge features for network and IoT protection.*
- Parental Controls – Manage online time and block inappropriate content to control your family's digital habits.
- Guest Network – Provides separate access for guests to secure the home network.
- Advanced WPA3 Encryptions – The latest WiFi security protocol, WPA3, brings new capabilities to improve cybersecurity in personal networks.**
- Access Control – Establishes a whitelist or blacklist to allow or restrict certain devices to access the internet.



Value-Added Features

- VPN Clients and Server Supported – With VPN client support, Archer GXE75 allows specified devices in your home network to access remote VPN servers without needing to install VPN software on every device.
- USB Ports – Connect external storage devices to rapidly share files, photos, and videos.
- Built-in Media Server – Allows you to play music, watch videos and view photos from any device on your network.
- More Values – Advanced functions like IPTV, IPv6 compatibility, and Access Point mode bring more values.

Specifications

Wireless

- **Standards:** IEEE 802.11ax 6 GHz, IEEE 802.11ax/ac/n/a 5 GHz, IEEE 802.11 ax/n/g/b 2.4 GHz
- **WiFi Speeds:** 6 GHz: 2402 Mbps (802.11ax), 5 GHz: 2402 Mbps (802.11ax), 2.4 GHz: 574 Mbps (802.11ax)[†]
- **WiFi Range:** 4× High-Performance Antennas with Optimized Layout
- **Working Modes:** Router Mode, Access Point Mode

Hardware

- **Ethernet Ports:** 1× 2.5 Gbps WAN/LAN Port, 1× 1 Gbps WAN/LAN Port , 3× 1 Gbps LAN Ports
- **USB Support:** 1× USB 3.0 Port
- **Buttons:** Power On/Off Button, Reset Button, WPS / Wi-Fi Button, LED Button
- **Antennas:** 4× High-Performance Antennas with Optimized Layout

Physical

- **Dimensions:** 9.3 × 5.1 × 7.6 in (237*129.5*193 mm)
- **Package Contents:**
 - Wi-Fi 6E Gaming Router Archer GXE75
 - Power Adapter
 - RJ45 Ethernet Cable
 - Quick Installation Guide
 - Reset Tool

Security

- **WiFi Encryption:** WPA, WPA2, WPA3, WPA/WPA2-Enterprise (802.1x)
- **Network Security:** SPI Firewall, Access Control, IP & MAC Binding, Application Layer Gateway, HomeShield Security
- **Guest Network:**
 - 6 GHz Guest Network, 5GHz Guest Network, 2.4 GHz Guest Network
- **VPN Server:** OpenVPN, PPTP, L2TP VPN Server, Wireguard VPN
- **VPN Client:** OpenVPN, PPTP, L2TP VPN Client, Wireguard VPN

Software

- **Protocols:** IPv4, IPv6
- **Service Kits:** HomeShield
- **EasyMesh:** Supported
- **Parental Controls:** HomeShield Parental Controls
- **WAN Types:** Dynamic IP, Static IP, PPPoE, PPTP, L2TP
- **Quality of Service:** QoS by Device
- **Cloud Service:** Auto Firmware Upgrade, TP-Link ID, DDNS
- **NAT Forwarding:** Port Forwarding, Port Triggering, DMZ, UPnP
- **DDNS:** TP-Link, NO-IP, DynDNS
- **Gaming Features:** Game Statistics, Game Panel (Network Status, Router Performance, RGB settings, Accelerated Games and Gears)
- **Gaming Acceleration:** Game Application Boost with QoS, Accelerate Game Devices with Gaming Port, Game Servers Acceleration by Gamers Private Network, Game Port Forwarding

Specifications

Test Data

- WiFi Transmission Power:
FCC: ≤ 30 dBm (2.4 GHz), ≤ 30 dBm (5 GHz), ≤ 30 dBm EIRP (6GHz)
CE: ≤ 20 dBm (2.4 GHz), ≤ 30 dBm (5 GHz), ≤ 23 dBm EIRP (6GHz)
- WiFi Reception Sensitivity:
2.4 GHz:
11ax HE20 MCS0 -96 HE20 MCS11 -65
11ax HE40 MCS0 -93 HE40 MCS11 -62
5 GHz:
11ax HE20 MCS0 -94 HE20 MCS11 -63
11ax HE40 MCS0 -92 HE40 MCS11 -61
11ax HE80 MCS0 -88 HE80 MCS11 -57
11ax HE160 MCS0 -85 HE160 MCS11 -54
6 GHz:
11ax HE20 MCS0:-95dBm, 11ax HE20 MCS11:-65dBm
11ax HE40 MCS0:-93dBm, 11ax HE40 MCS11:-63dBm
11ax HE80 MCS0:-90dBm, 11ax HE80 MCS11:-60dBm
11ax HE160 MCS0:-87dBm, 11ax HE160 MCS11:-58dBm



For more information, please visit

https://www.tp-link.com/products/details/?model=Archer+GXE75_V1

or scan the QR code left

Other

- System Requirements:
Microsoft Edge, Firefox, Chrome, Safari, or other JavaScript-enabled browser
*You are recommended to use the latest version
Cable or DSL Modem (if needed)
Subscription with an internet service provider (for internet access)
- Certifications: FCC, CE, RoHS
- Environment:
Operating Temperature: 0°C ~40°C (32°F ~104°F)
Operating Humidity: 10%~90% non-condensing

This device complies with part 15 of the FCC Rules. Operation is subject to the following two conditions: (1) This device may not cause harmful interference, and (2) this device must accept any interference received, including interference that may cause undesired operation. Specifications are subject to change without notice. TP-Link is a registered trademark of TP-LINK CORPORATION PTE. LTD. Other brands and product names are trademarks of registered trademarks of their respective holders. Copyright © 2024 TP-LINK CORPORATION PTE. LTD. All rights reserved.
*Maximum wireless signal rates are the physical rates derived from IEEE Standard 802.11 specifications. Actual wireless data throughput and wireless coverage are not guaranteed and will vary as a result of network conditions, client limitations, and environmental factors, including building materials, obstacles, volume and density of traffic, and client location.
¹Use of Wi-Fi 6 (802.11ax), Wi-Fi 6E, and features including OFDMA, 1024-QAM, and HE160 requires clients to also support the corresponding features. Not all seven 160 MHz channels may be available in the 6 GHz band in some regions/countries due to regulatory restrictions.
²2.5 Gbps internet speeds require compatible service plans and equipment.
³HomeShield includes both basic and advanced features. Advanced features require a paid subscription. For details, visit tp-link.com/homeshield
⁴Use of WPA3 requires clients to also support the corresponding feature.
⁵TP-Link EasyMesh-compatible products can network with other devices that use EasyMesh. Failed connections may be due to firmware conflicts of different vendors. The EasyMesh-compatible function is still being developed on some models and will be supported in subsequent software updates.
Actual network speed may be limited by the rate of the product's Ethernet WAN or LAN port, the rate supported by the network cable, internet service provider factors, and other environmental conditions.
This router may not support all the mandatory features as ratified in the IEEE 802.11be specification.
Further software upgrades for feature availability may be required.
Copyright © 2024