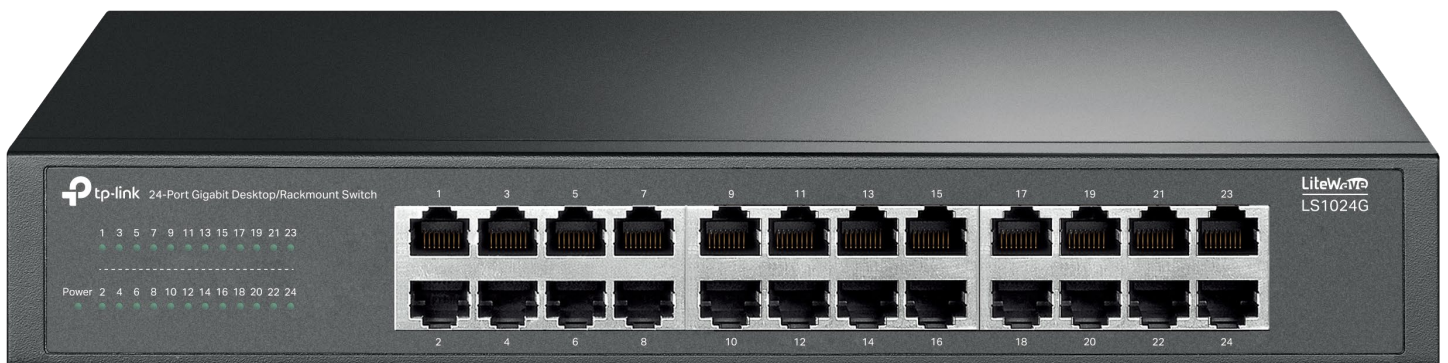


# LiteWave Unmanaged Switch | Datasheet

## LS1024G

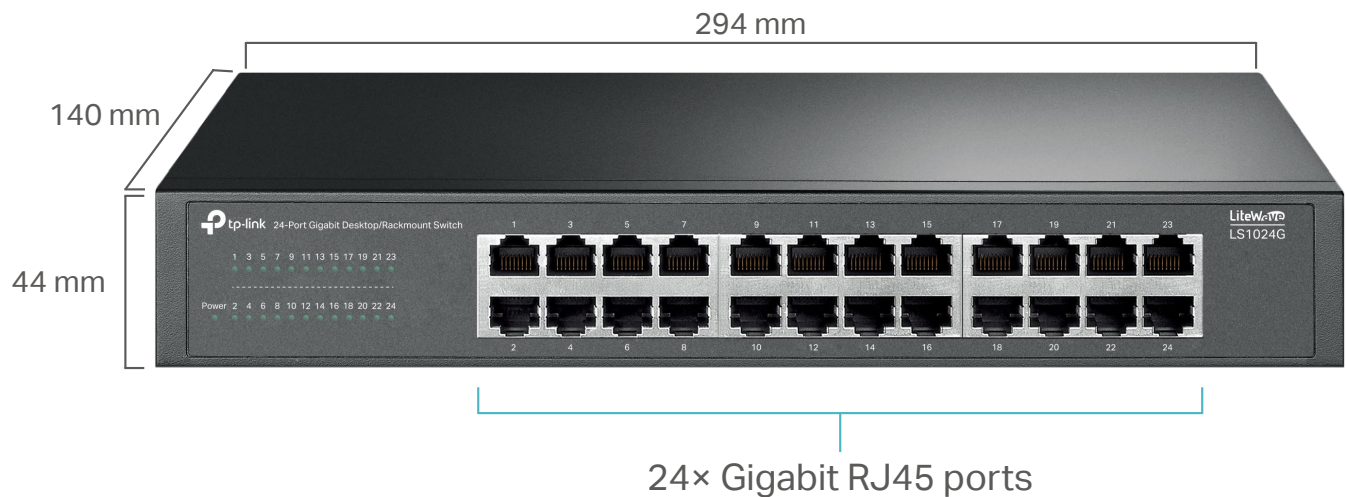
24-Port Gigabit Desktop/Rackmount Switch



## Highlights

- 24× 10/100/1000Mbps ports
- Supports MAC address self-learning, Auto MDI/MDIX and Auto Negotiation
- Plug & play design
- QoS ensures smooth traffic for latency sensitive applications such as voice or video
- Innovative energy-efficient technology saves power consumption
- Fanless design reduces power consumption and ensures silent operation, ideal for noise-sensitive homes or businesses
- Durable metal casing provides improved heat dissipation and ensures a longer product life
- Desktop or rackmount installation

# Product Pictures



# Specifications

Model	LS1024G
Standards	IEEE 802.3, IEEE 802.3i, IEEE 802.3u, IEEE 802.3ab, IEEE 802.3x, IEEE 802.3p
Interface	<ul style="list-style-type: none"><li>• 24*10/100/1000Mbps RJ45 Ports</li><li>• AUTO Negotiation/AUTO MDI/MDIX</li></ul>
Network Media (Cable)	<ul style="list-style-type: none"><li>• 10BASE-T: UTP category 3, 4, 5 cable (maximum 100m)</li><li>• 100BASE-TX: UTP category 5 or above cable (maximum 100m)</li><li>• 1000BASE-T: UTP category 5e or above cable (maximum 100m)</li></ul>
Transmission Method	Store-And-Forward
Packet Forwarding Rate	35.7 Mpps
Switch Capacity	48 Gbps
MAC Address Table	8K
Packet Buffer Capacity	2 Mbit
Jumbo Frame	10 KB
Power Supply	100-240V~50/60Hz, 0.6A
Max Power Consumption	12.6 W (110V/60Hz)
Max Heat Dissipation	42.77 BTU/h (110V/60Hz)
MTBF	1183684h @ 25°C
Fan Quantity	Fanless
Installation	Desktop/Rackmountable
Dimensions ( W x D x H )	11.6×5.5×1.7 in (294×140×44 mm)
Operating Temperature	0°C to 45 °C (32 °F to 113°F )
Storage Temperature	-40 °C to 70 °C (-40 °F to 158°F )
Operating Humidity	10% to 90% non-condensing
Storage Humidity	5% to 90% non-condensing
Package Contents	Switch, Power Cord, Rackmount Kits, Rubber Feet, Installation Guide
Certification	CE, FCC, RoHS