



4G LTE Mobile Wi-Fi

Go Anywhere Connect Everywhere

M7352



4G 4G LTE
150Mbps[†]

10h 10 Hours
Usage[‡]

 tpMiFi
App

Highlights

Artful Little Gadget for Life on the Go

The M7352 features a compact, elegant design very suitable for travel, business trips, outdoor activities or wherever you may be.



- Supports multiple devices when traveling



- Enjoy a Wi-Fi hotspot without draining your phone's battery

All useful info at a glance

The intuitive screen display of M7352 makes it easy to stay within your data budget and avoids going over the monthly data cap. The screen also displays other much more information of battery life, signal strength, Wi-Fi status, connected users and more.



Highlights

Easy Management with the tpMiFi App

With the tpMiFi App, you can easily access and manage the M7352 from your connected iOS/Android devices. The tpMiFi app allows you to establish data limits, control which devices can access your Wi-Fi, send messages, and share media files to/from a removable Micro SD card.



Features



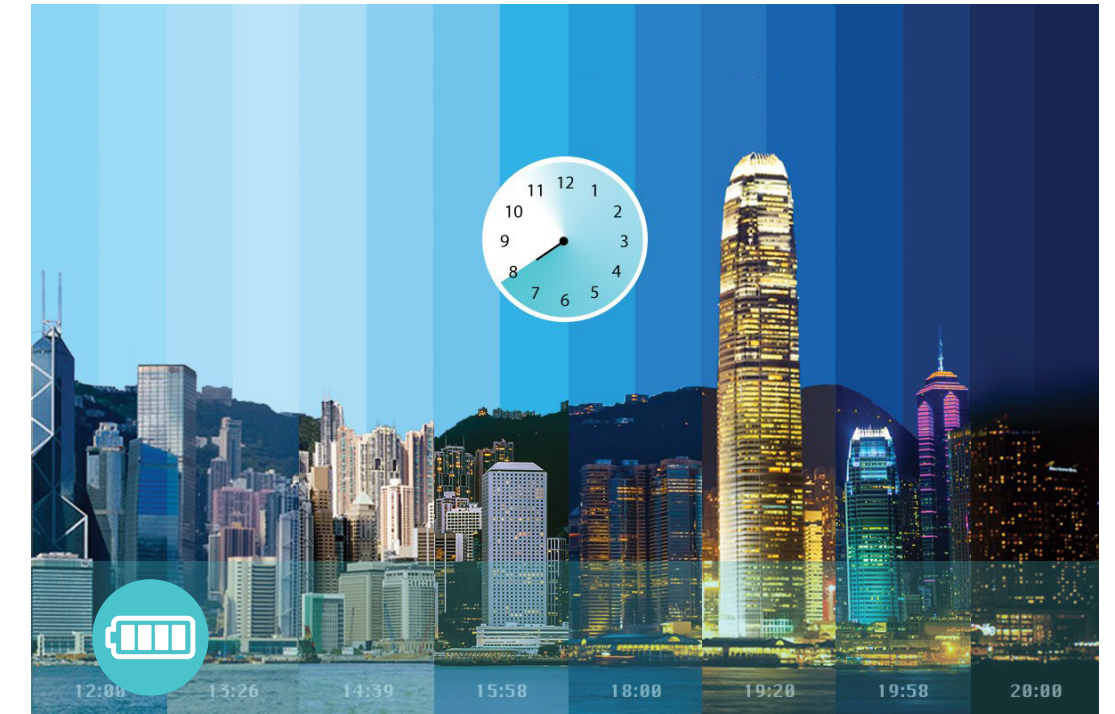
4G LTE

- 4G LTE – Supports 4G LTE network
- 150Mbps/50Mbps – Reach up to 150Mbps download speeds and 50Mbps upload speeds, to enjoy HD movies without interruption, download files in seconds, and hold a video chat without dropouts.



Convenient Hotspot

- Plug and Play – Just insert a 4G SIM card to create your reliable personal Wi-Fi hotspot on the move
- 10 Wi-Fi devices – Instantly share 4G LTE connectivity with up to 10 Wi-Fi enabled devices – Tablets, mobile phones, laptops, game consoles and more



10 Hours Usage

- 2100mAh – 2100mAh battery
- 10 hours – 10 hours of 4G sharing
- 760 hours – 760 hours of standby

* Service duration may vary due to different user environments

Features



Portable Device

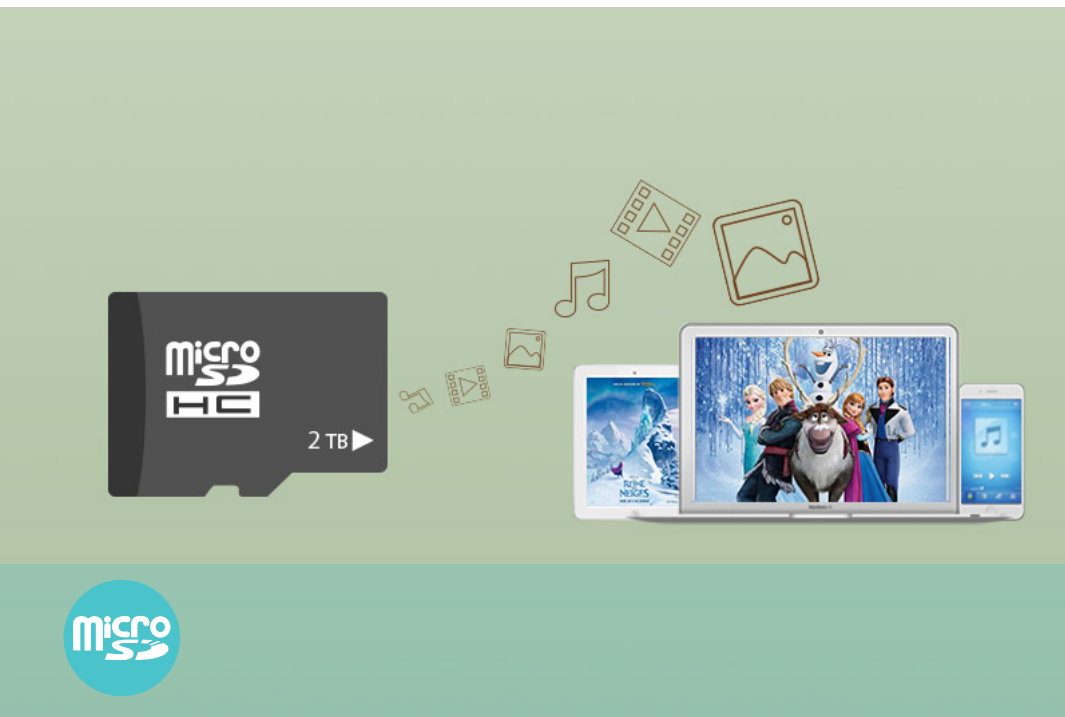
- Compact design – Suitable for travel, business trips, outdoor activities or wherever you may be



Intuitive Screen Display

- Intuitive view – Intuitive view of data usage, battery life, Wi-Fi name, Wi-Fi password, and more

	Signal Strength
4G	Network Type
	Data Roaming
	Wi-Fi Status and Connected Wi-Fi Devices
	Message
	Battery Life
560MB	Cumulative Data Usage



Storage Wireless Sharing

- Storage Sharing – Easily share photos, music, videos and more wirelessly across your network
- Up to 2TB – Equipped with a micro SD card slot for up to 2TB of optional storage^s
- * Micro SD card sold separately.
- * You can access and share files using third-party samba Apps like ES File Explorer on Android or FileExplore on iOS

Specifications

Hardware

- Interfaces: USB-C port, Nano SIM card slot, Micro SD card slot
- Micro SD Card Reader: Up to 2TB
- Button: Menu button, Power button, Reset button
- Screen Display:
Traffic statistics, Wi-Fi status, User numbers, Network type (3G/4G), Signal strength, Internet connection status, Messages, Battery life, Wi-Fi name, Wi-Fi password
- External Power Supply: 5V/1A
- Dimensions (W x D x H): 4.2 × 2.6 × 0.7 in. (106 × 66 × 16.7mm)
- Weight: About 111g (Battery included)
- Antenna: Internal Antennas



For more information, please visit
https://www.tp-link.com/products/details/?model=M7352_V1
or scan the QR code left

Wireless

- Network Type:
4G: FDD-LTE B1/B3/B5/B7/B8/B20/B28
(2100/1800/850/2600/900/800/700 MHz)
TDD-LTE B38/B40/B41 (2600/2300/2500 MHz)
3G: HSPA+/HSDPA/HSUPA/WCDMA
B1/B5/B8 (2100/850/900 MHz)
- Wireless Standards: IEEE 802.11b/g/n/ax
- Frequency: 2.4GHz
- Signal Rate: 287Mbps
- Transmit Power: <20dBm
- Reception Sensitivity:
11b 11Mbps: -87dBm;
11g 54Mbps: -73dBm;
11n HT20 MCS7: -70dBm;
11n HT40 MCS7: -67dBm;
11ax HE20M MCS9: -65dBm;
11ax HE40M MCS9: -62dBm;
- Wireless Security: Support WPA-PSK/WPA2-PSK, WPA3,
Wireless MAC Filtering, Enable/Disable SSID Broadcast
- DHCP: Server, Client, DHCP Client List

Others

- Certification:
CE, RoHS
- System Requirements:
Windows 11/10/8/7/vista/XP, Mac OS, Android, iOS,
Windows Phone
- Environment:
Operating Temperature: 0°C~35°C (32°F ~95°F)
Operating Humidity: 10%~90% non-condensing
- Package Contents:
Mobile Wi-Fi M7352
USB-C Cable
2100mAh Battery
Quick Installation Guide

©2025 TP-Link

[†]Maximum wireless signal rates are the physical rates derived from IEEE Standard 802.11 specifications. Actual wireless data throughput and wireless coverage are not guaranteed and will vary as a result of 1) environmental factors, including building materials, physical objects, and obstacles, 2) network conditions, including local interference, volume and density of traffic, product location, network complexity, and network overhead, and 3) client limitations, including rated performance, location, connection, quality, and client condition.

[‡]Actual battery time may vary due to different user environments.

[§]SIM card and SD card are sold separately.