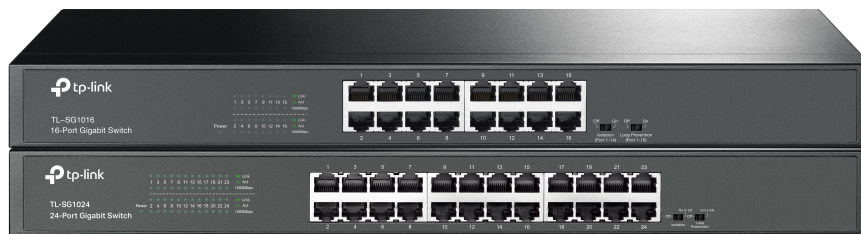


16/24-Port Gigabit Rackmount Switch

MODELS: TL-SG1016/ TL-SG1024 Datasheet



Highlights

- 10/100/1000 Mbps Auto-Negotiation RJ45 ports supporting Auto-MDI/MDIX
- Supports 802.1p/DSCP QoS functions
- Durable metal casing and a fanless design
- IEEE 802.3x flow control provides reliable data transfer
- Green Ethernet technology reduces power consumption
- Isolation Mode easily divides traffic for specific ports with one click to avoid snooping, tampering, and isolate broadcast storm for higher security.
- Monitor and address loop-related issues within your network structure to prevent disruptions caused by looping
- Plug and play, no configuration needed

Overview

The TL-SG1016/TL-SG1024 Gigabit Ethernet Switch represents a high-performance, low-cost, simple, seamless, and standardized upgrade that allows you to transform your existing network and achieve 1000Mbps speeds. All 16/24 ports support auto MDI/MDIX, so there is no need to worry about cable types. Simply plug and play. With the innovative energy-efficient technology, the TL-SG1016/TL-SG1024 can reduce power consumption and the vast majority of its packaging material can be recycled, making it an eco-friendly solution for your business network.

TP-Link Green Technology

The new TL-SG1016/TL-SG1024 Gigabit Rackmount Switch features a variety of energy-efficient technologies that allow you to increase your network capacity while consuming less power. The switch limits the carbon footprint of your network by automatically adjusting power consumption in accordance with link status and cable length. It complies with the EU RoHS, which prohibits the use of certain hazardous materials, and most of the packaging material is recyclable.

Enhanced Performance

All 16/24 ports are Gigabit RJ-45 ports, allowing them to support large file transfers and makes them compatible with 10Mbps and 100Mbps Ethernet devices. Since both switches feature a non-blocking switching architecture, the TL-SG1016 and TL-SG1024 forward and filters packets at full wire-speed, achieving maximum throughput. 10KB Jumbo frame significantly improves performance during large file transfers. IEEE 802.3x flow control supports Full Duplex mode and backpressure for Half Duplex mode alleviates traffic congestion to make the TL-SG1016/TL-SG1024 more reliable. This makes the TL-SG1016/TL-SG1024 a perfect choice for upgrading your network to Gigabit speed while protecting your previous investment.

Easy of Use

The automated features of this gigabit switch make installation hassle-free. No configuration is required. Auto MDI/MDIX eliminates the need for crossover cables. Auto-negotiation on each port senses the link speed of network devices (10,100, or 1000 Mbps) and intelligently adjusts for compatibility and optimal performance.

Specifications

Features & Performance

Product Picture			
Model		TL-SG1016	TL-SG1024
Hardware Features	Standards and Protocols	IEEE 802i, IEEE 802.3u, IEEE 802.3ab, IEEE 802.3x, IEEE 802.1p	
	Interface	16 10/100/1000Mbps RJ45 Ports (Auto Negotiation/Auto MDI/MDIX)	24 10/100/1000Mbps RJ45 Ports (Auto Negotiation/Auto MDI/MDIX)
	Forwarding Mode	Store-and-Forward	
	Network Media	10BASE-T: UTP category 3, 4, 5 cable (maximum 100m) 100BASE-TX/1000BASE-T: UTP category 5, 5e or above cable (maximum 100m)	
	Power Supply	100-240VAC, 50/60Hz	
	Green Technology	Yes	
	QoS	802.1p/DSCP QoS (for V12 and later versions only)	802.1p/DSCP QoS (for V11 and later versions only)
	Isolation Mode	Yes (For Ports 1-14)	Yes (For Ports 1-22)
	Loop Prevention	Yes (For Ports 1-16)	Yes (For Ports 1-24)
	LED	Power, 1000Mbps, Link/Act	
	Dimensions (W x D x H)	17.3*7.1*1.7 in. (440*180*44 mm)	
	Fanless	Yes	
Performance	Switching Capacity	32Gbps	48Gbps
	Packet Forwarding Rate	23.8Mpps	35.7Mpps
	MAC Address Table	8K	
	Jumbo Frame	10KB	
	Max Power Consumption	10.68 W (220V/50Hz)	13.46 W (220V/50Hz)
	Max Heat Dissipation	36.31 BTU/h	45.76 BTU/h
Certification		CE, FCC, RoHS	
Environment	Operating Temperature	0°C~40°C (32°F~104°F)	
	Storage Temperature	-40°C~70°C (-40°F~158°F)	
	Operating Humidity	10%~90%RH non-condensing	
	Storage Humidity	5%~90%RH non-condensing	
Ordering Information		16-Port Gigabit Rackmount Switch	24-Port Gigabit Rackmount Switch