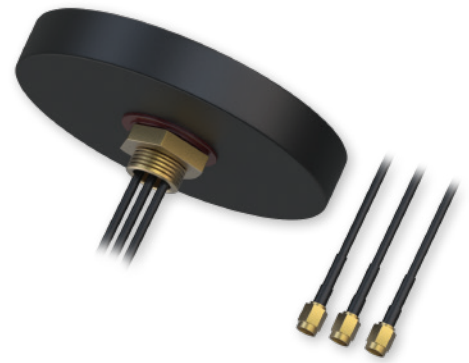


# COMBO SISO MOBILE/GNSS/WIFI ROOF SMA ANTENNA



## TECHNICAL DATA

### MECHANICAL/ENVIRONMENTAL

Mounting method	Screw
Radome ingress protection rating	IP67 (exclude cable outlet)
Radome material	ABS
Housing dimensions	Ø 80.5 x 15.2 mm
Cable	3x RG174, 3000 mm
Operating temperature	-40 ~ +85 °C
Weight	215 ± 10 g
UV resistance	✓
RoHS Compliant	✓

### LTE MIMO ANTENNA

Frequency range	617 - 960, 1710 - 2690 MHz
Polarization	Linear
Radiation pattern	Omni - Directional
Gain	3.5 dBi
V.S.W.R	≤1.5
Impedance	50 Ω
Connector type and count	SMA Male

### GNSS ANTENNA

Frequency range	1575 - 1610 MHz
Polarization	RHCP
LNA gain	28 dBi
LNA noise figure	1.5 dB
V.S.W.R	≤1.5
Impedance	50 Ω
Supply voltage	2.7 - 5.0 ± 0.5 VDC
Current consumption	<15 mA
Connector type and count	SMA Male

### WI-FI ANTENNA

Frequency range	2350 - 2500 MHz
Polarization	Linear
Radiation pattern	Omni - Directional
Gain	2.5 dBi
V.S.W.R	≤1.5
Impedance	50 Ω
Connector type and count	RP-SMA Male

