

DS-1100KI(C) Network Keyboard



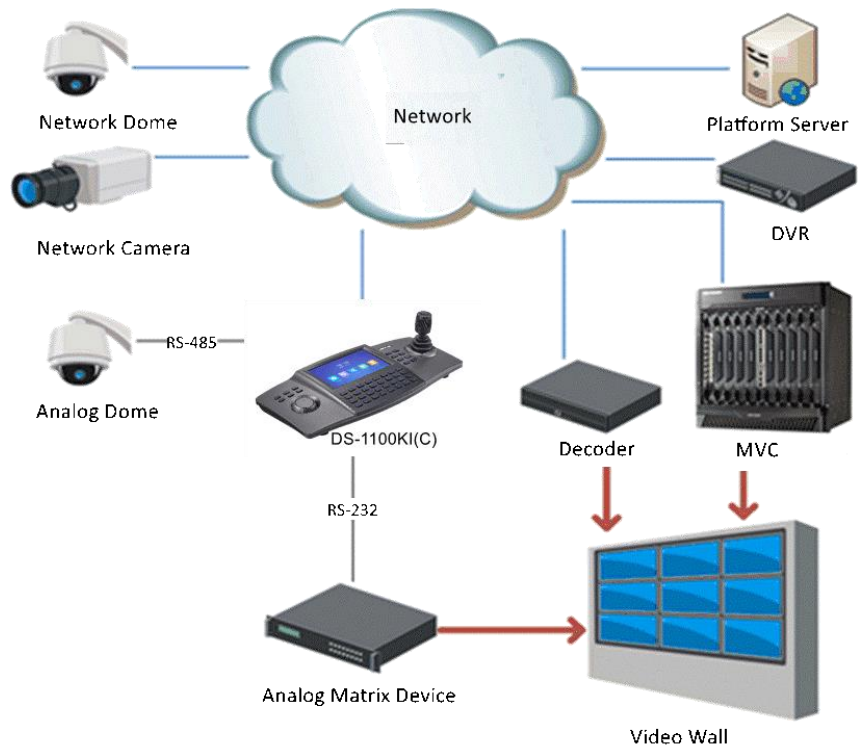
DS-1100KI(C) is a new generation network keyboard independently developed by Hikvision. It features in a 7-inch LCD touch screen and a 4-axis joystick. It supports network access to DVRs, DVSSs, NVRs, network cameras, network domes, multi-functional video centers (MVCs), decoders, iSecure, and HikCentral and supports analog matrix and analog dome access, with powerful functions and quick and simple operations. It can be widely used in finance, telecommunication, transportation, electric power, education, water conservancy, and other fields.

- Supports video wall division by areas
- Supports window opening/closing, window movement, window scaling, window division, sub-window scaling and other operations
- Supports group operation, macro operation and other batch operations
- Supports the real-time preview of the camera image via the keyboard
- Supports switching the camera location ID by using the PREV button and NEXT button on the keyboard
- Supports PTZ direction control via the 4-axis joystick
- Supports decoder playback via the video wall
- Supports the playback of the DVR and NVR video files via the keyboard and supports the picture capturing and clipping
- Supports device access via the SDK and ONVIF standard protocols
- Accessible to iSecure and HikCentral
- Allows 32 users (1 administrator and 31 operators) to manage a maximum of 4000 devices
- Supports adding, modifying, and deleting the camera locations in batches
- Supports import/export of configuration files

▪ Specification

Interface	
Network Interface	RJ45 100 M/1000 M self-adaptive Ethernet interface × 1
Wi-Fi	Not supported
USB Interface Type	USB 2.0 × 1
Serial Interface	RS-485, RS-422
General	
Power Supply	12 VDC
Power Consumption	≤ 15 W
Dimensions (W × H × D)	435 mm × 193 mm × 110 mm (17.13 inch × 7.60 inch × 4.33 inch) (L × W × H)
Gross Weight	3.42 kg (7.54 lb.)
Working Temperature	-10 °C to 55 °C (14°F to 131°F)
Working Humidity	10% to 90%
Control Method	Network method, serial control
Display	7 inch LCD
Joystick	4-axis single button joystick
Audio Input	
Audio Input Interface	3.5 mm stereo, supporting the audio communication
Audio Output	
Audio Output Interface Type	3.5 mm stereo, supporting the audio communication
System	
System	Linux system
Decoding	
Decoding Performance	4 × 1080p
Certification	
Obtained Certification	CE EMC,CB,CE LVD,IC VOC, EAC,RCM,FCC SODC,UL,CE-ROHS,WEEE,REACH
FCC	Part 15 Subpart B,ANSI C63.4-2014
CE	EN 55032:2015+A1:2020, ENIEC61000-3-2:2019+A1:2021, EN 61000-3-2:2013+A1:2019, EN 50130-4:2011+A1:2014,EN 55035:2017+A11:2020

▪ Typical Application



▪ Available Model

DS-1100KI(C)

See Far, Go Further



www.hikvision.com
support@hikvision.com

